

OLT COUNTY PRIMARY OFFER OF WHEAT (2010-2012), IN THE REGIONAL CONTEXT

Radu Lucian PÂNZARU¹, Dragoș Mihai MEDELETE¹

¹University of Craiova, Faculty of Agriculture and Horticulture, 19 Libertății, 200421, Craiova, Romania, Phone: +40 727 712 967, Fax: + 40 251 418 475, E-mail: rlp1967craiova@yahoo.com, medelete@yahoo.com

Corresponding author: rlp1967craiova@yahoo.com

Abstract

The paper refers to the primary wheat supply situation in Olt County, for 2009-2011, being considered in a regional context. Olt County appears as a major agricultural producer Southern of the Region - West, emphasized, especially through production potential which it holds. Such are noted the total area and arable area that it ranks first regionally. Wheat is one of the main crops at regional and county level, which has implications in the existence of producers. Aspect is particularly relevant for areas that have not traditionally linked to the practice of horticulture or vegetable growing.

Keywords: area, percentage, yield, wheat

INTRODUCTION

Wheat is one of the oldest cultivated plants being cultivated by humans in the Middle East with about 10-12000 years BC.

In our country wheat crop goes back over 2500 years, evidence for this being the inscriptions on the coins of old cities on the Black Sea (Tomis, Callatis). For example, coins of the city Tomis (Constanta), wore on one side the image of Demeter, goddess of agriculture, and on the other hand, ears of wheat. Therefore, from ancient times, wheat was used more than any other plant in human nutrition and remained inseparable from civilized man throughout history. Wheat is the most important cereal as a result of the use on which it receives [5].

For farms in Romania, wheat are important as food, industrial, fodder, agricultural technology, technological exports as a source of profit [1].

Factors profitability and economic efficiency of winter wheat are the average yield per hectare, cost management and trading [3].

Deals on agricultural commodity markets is dispersed and irregularly quantitative. Production volume depends on the one hand of the technical equipment and on the other on the climatic and biological conditions which are

random, printing these commodity on markets from agriculture a highly mobile character. Quantitative bid of a product on the sales market depends primarily on the benefit that it will achieve the entrepreneur. Because the gain (benefit) may be influenced by changes in costs and (or) price is considered as the main causes that influence the supply of agricultural products, the following: land fund with reference to agricultural land available amelioration systems used, the yields obtained in pure culture and successive production capacity and technical equipment of the company, which makes and determine the actual agricultural production system, climatic factors affecting the supply of agricultural products through those limiting factors for normal climatic conditions and accidental situations that can alter normal climatic conditions, yields (yields) crops and animals that are related to production systems and technologies used, plant protection and veterinary, energy and mechanization available feed; work force employed in agriculture, its structure, financing and facilities loans and socio-economic factors that are reflected in market access and stability of agricultural producers supply the market price of the product, the price of substitute product, price means of production [4].

Structure of the offer is differentiated causing changes in annual baking grain market. Ensuring the wheat consumption was achieved by importing significant amounts. Market development peasant or more specifically shorting grain movement is the result of millions of producers on tenderers small partial contribution, but major nationwide. The offer fit The factors which condition it and are directly correlated with the yields achieved, ie cultivated areas and yields per hectare. At farm level, the supply of cereal products, the quantity of products that is intended market comes increasingly more from the big operators who take land on lease from a large number of individuals. Small family farms producing mainly for covering their own households. Only a small part of the production in the family farms are entering the commercial markets offer [2].

MATERIALS AND METHODS

Making the paper involved documenting, through the use of statistical reporting data [6], [7]. In order to achieve the paper we worked with a system of indicators to highlight specific primary supply of corn - area cultivated, total production and average yield.

Therefore were collected data on the volume quantitative achieved at regional and county level.

The data collected and analyzed, covers the period 2009-2011, operating and average period. Media was determined by computing the following relationship:

$$M = \frac{X_1 + X_2 + \dots + X_n}{n}$$

RESULTS AND DISCUSSIONS

Development Region South - West respectively Olt trying constitution primary supply of wheat, taking into account area cultivated, total production and average yield obtained per unit of product - hectare. In Table 1 are included the data for area

cultivated with wheat for South - West Development Region.

Table 1. South - West region, Wheat - area cultivated (ha) *

Nr. crt.	Year	Effective	Dynamic		% Beside national level
			Ibf	Ibm	
1	2009	385137	100	100	18.0
2	2010	407681	105.9	105.9	18.9
3	2011	353149	91.7	86.6	18.1
4	Average 2009-2011	381989	99.2	108.2	18.4

*http://www.dolj.insse.ro/cmsdolj/rw/pages/R40_Supra fCultivExplPpCult.ro.do

It can be seen that the region has cultivated, on average, an area of 381989 ha of wheat level based on annual sequential situations: 353149 ha in 2011, 385137 ha in 2009, 407681 ha for 2010.

The dynamics made, shown that the surface has increased by 5.9% in 2010 compared to the first term of the dynamical series, then the indicator decreased by 9.3 and 13.4% to the terms of reference. For average can notice a decrease of 0.8% compared to 2009 and 1.08 times outrunning the situation in 2011.

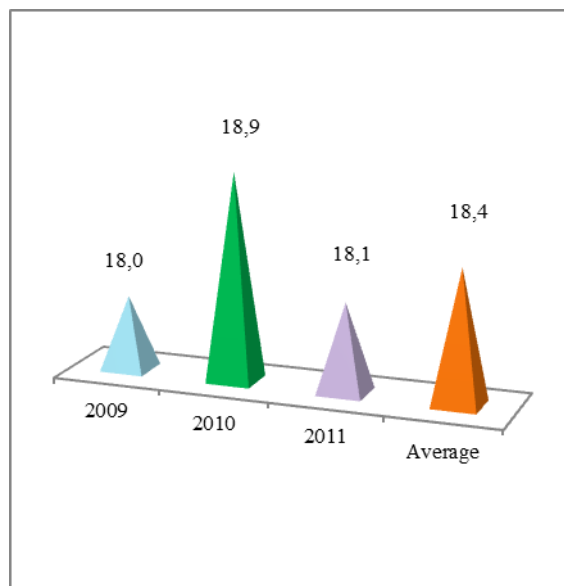


Fig. 1. Wheat. South - West region - a share of the national area (%)

In this context it is worth noting that the region has achieved, compared to the national situation variable weights: 18.0, 18.9 and

18.1% for the years 2009, 2010 and 2011. Therefore it can be seen that the average period is characterized by a share of 18.4% in the national situation of the indicator - fig. 1. In terms of total production of wheat (Table 2.) South - West region has achieved an average of 1048778.3 t, which is - in dynamics - an excess of 4.7% of the first term of reference and a reduction of 7.5% compared to the previous term of the dynamic series.

Table 2. South - West region, Wheat - Total production (t) *

Nr. crt.	Year	Effective	Dynamic		% Beside national level
			Ibf	Ibm	
1	2009	1002147	100	100	19.3
2	2010	1010587	100.8	100.8	17.4
3	2011	1133601	113.1	112.2	15.9
4	Average 2009-2011	1048778.3	104.7	92.5	17.3

*http://www.dolj.insse.ro/cmsdolj/rw/pages/R43_ProdAgrVegPpCult.ro.do

This situation has been determined by annual amounts of: 1002147 t in 2009, 1010587 t in 2010 (+0.8% compared to the previous term of the dynamic series), 1133601 t of 2011 (increases of 1.13 and 1.12 times respectively of the terms of reference).

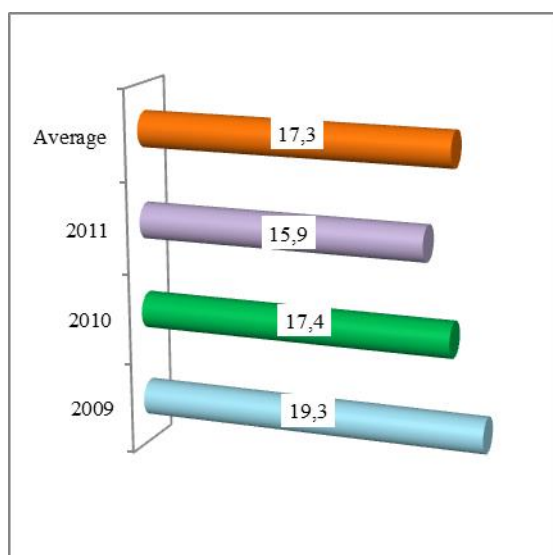


Fig. 2. Wheat. South - West region - share in national production (%)

Analyzing the in the national context, it may be noted that the region provided between 15.9 and 19.3% of national quantity of wheat (2011 and 2009) average share being 17.3% (assuming a level of 17.4% specific to 2010) - Fig 2.

Table 3 contains the specific situation of South-West Region, in terms of average production achieved.

Table 3. South - West region, Wheat - Average yield (kg / ha)

Nr. crt.	Year	Effective	Dynamic		% Beside national level
			Ibf	Ibm	
1	2009	2602	100	100	107.0
2	2010	2479	95.3	95.3	91.8
3	2011	3210	123.4	129.5	87.6
4	Average 2009-2011	2746	105.5	85.5	94.4

*http://www.dolj.insse.ro/cmsdolj/rw/pages/R44_ProdMedHectarPrincipCult.ro.do

The region recorded an average of 2746 kg/ha the indicator, level which is based on the quantities of 2602 kg/ha in 2009, 2479 kg/ha in 2010 and 3210 kg/ha for 2011.

As a result of this situation is apparent that for the dynamics composed, fixed base indices ranged from 95.3% in 2010 to 123.4% in 2011 (5.5% for period average), while the mobile base indications was below par in 2010 and period average (-4.7 and -14.5% respectively compared with the two reference bases) and above unit for 2010 (downgrade 1.29 times the term comparison).

Analyzed in the national context, the region was below the general level of the indicator - only 94.4% of the comparator. Sequentially finding subunit levels in 2010 and 2011 (-8.2 and -12.4% respectively) and a favorable situation in 2009, when the comparator is exceeded by 7.0% - Fig. 3.

Table 4 contains the data for wheat area cultivated in the county.

It is apparent that the cultivated area ranged between 136877 ha in 2009 and 143291 ha for 2011, while the average period reached 140404.7 ha.

Dynamics of indicators is dominated by the component index value above par, the only

exception being signaled for the average period - decrease of 2.0% from the previous term of the dynamic series (2011).

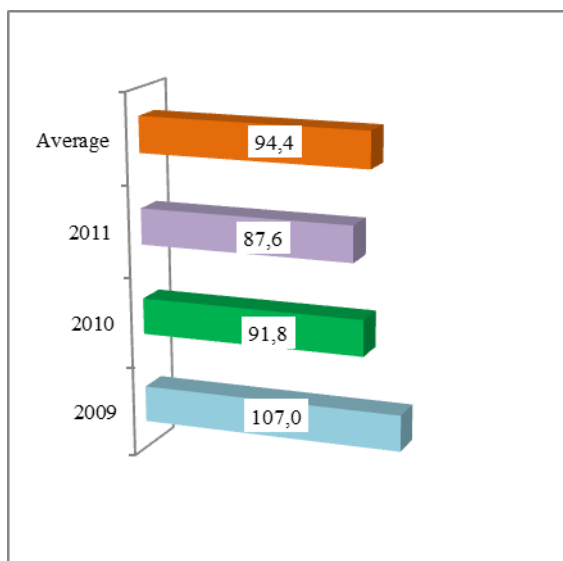


Fig. 3. Wheat. South - West region. Average production - positioning to national level (%)

Table 4. Olt County, Wheat – Cultivated surface (ha) *

Nr. crt.	Year	Effective	Dynamic		% Beside regional level
			Ibf	Ibm	
1	2009	136877	100	100	35.5
2	2010	141046	103.1	103.1	34.6
3	2011	143291	104.7	101.6	40.6
4	Average 2009-2011	140404.7	102.6	98.0	36.8

*<http://www.olt.insse.ro/main.php?lang=fr&pageid=436>

Reported on regional levels of the indicator it can be observed an average share for Olt county of 36.8%, with annual sequential weights: 34.6% in 2010 (141046 ha), 35.5% for 2009 and 40.6% in the case of 2011 - fig 4.

In terms of total production of wheat, Olt County is characterized by an average period 364591.7 t average which appeared as a result of annual sequential levels: 426101 t in 2009, 360474 t for 2010 and 307200 t for 2011 - table 5.

Dynamics of indicators is dominated by the subunit levels component index, except for the mobile base period average - 18.7%

compared with the previous term of the dynamic series (2011).

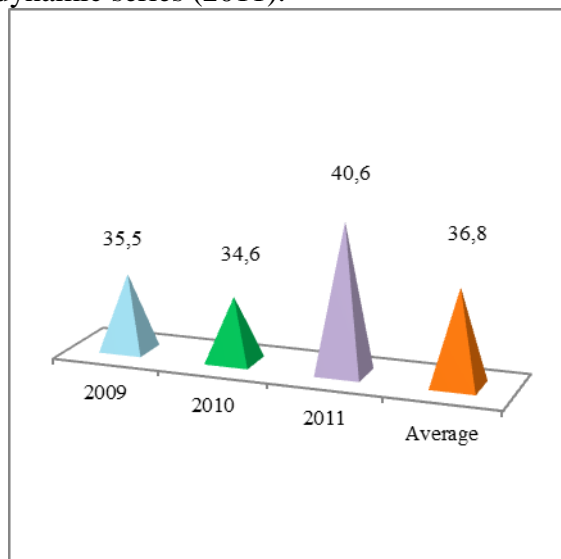


Fig. 4. Wheat. Olt County - share in the regional area (%)

Table 5. Olt County, Wheat - Total production(t)*

Nr. crt.	Year	Effective	Dynamic		% Beside regional level
			Ibf	Ibm	
1	2009	426101	100	100	42.5
2	2010	360474	84.6	84.6	35.7
3	2011	307200	72.1	85.2	27.1
4	Average 2009-2011	364591.7	85.6	118.7	34.8

*<http://www.olt.insse.ro/main.php?lang=fr&pageid=423>

Starting from the reporting bases used were observed reductions of 15.4% in 2010, 27.9 and 14.8% in 2011, 14.4% of the average period - compared to the first term of the dynamical series (2009).

In the regional context, Olt represents one of the important producers of wheat, making it the annual percentages of 27.1, 35.7, 42.5 and 34.8% for the years 2011, 2010, 2009, and respectively for the average period - fig. 5.

If we consider average production the data for wheat crop (Table 6.) can be observed an average indicator of 2597 kg/ha, which is based on annual sequential levels, such as 2144 kg/ha for the year 2011, 2556 kg/ha in the year 2010 and 3113 kg/ha for 2009.

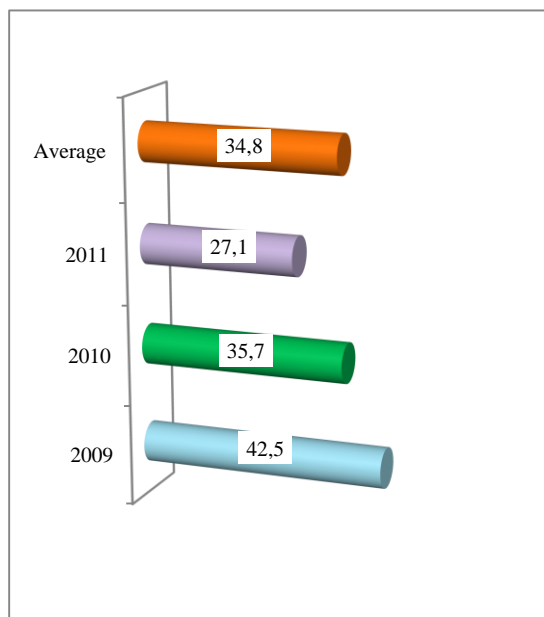


Fig. 5. Wheat. Olt County - share in the regional production (%)

Table 6. Olt County, Wheat - Average production (kg / ha)*

Nr. crt.	Year	Effective	Dynamic		% Beside regional level
			Ibf	Ibm	
1	2009	3113	100	100	119.6
2	2010	2556	82.1	82.1	103.1
3	2011	2144	68.9	83.9	66.8
4	Average 2009-2011	2597	83.4	121.1	94.6

*<http://www.olt.insse.ro/main.php?lang=fr&pageid=434>

Dynamics of average production per hectare is one similar to that of total production. Fixed base indices have strict subunit values compared to the reference period (68.9, 82.1 and 83.4% for 2011, 2010 and period average). For, the second category of indicators, the mobile base is found a range from 82.1% in 2010 and 121.1% for the period average (16.1% in 2011 compared to basis of reporting).

Compared with the regional situation of the indicator, Olt County is characterized by positioning both above and below par. Therefore in 2009 and 2010, the benchmark is exceeded by 19.6 and 3.1% respectively, while for 2011 and for average of the period are recorded decreases by 33.2 and 5.4%

respectively compared to bases reporting - fig. 6.

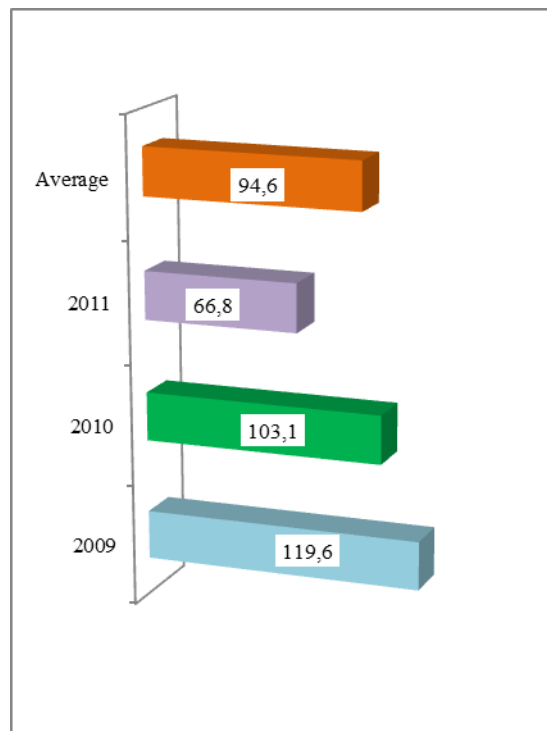


Fig. 6. Wheat. Olt County. Average production - positioning compared to regional level (%)

CONCLUSIONS

Starting from the above issues appear as conclusions the following:

a. regarding regional situation:

- wheat represented as surface, 36.88% of regional arable land (1035785.3 ha) and 48.47% of the area cultivated with cereals (788057.7 ha). It is noteworthy that wheat is ahead corn as share in the total area cultivated with cereals, which hold only 44.21% of the indicator (348397.7 ha);
- within the total production of cereals (2592532 t), wheat held a share of 40.45%, which surpassed of maize - 54.15% (1403974.3 t);
- performance issues are related more to climate order and less technological in the national context, given the region's weights somewhat similar to nationally in terms of area cultivated and total production. While not neglected poor technological performance compared to the national situation - issues

highlighted by positioning the regional average production compared to national;

b. concerning the county situation:

- area cultivated with wheat was 41.98% of the arable land cultivated (334396.7 ha) and 55.13% of the area occupied by cereals (254665 ha). Compared to corn cultivated on average of 91375 ha (36.02% of the cereal sector related indicator), wheat showed an excess of 53.65%;

- total wheat production represented 50.40% of total cereal production (723351.7 t), exceeding the total production of corn 60265.4 t (304326.3 t - 42.07% in the index structure);

- average production per hectare it may be established downward trend of the indicator (successive annual declines of 17.9 and 16.1% in 2010 and 2011 compared with the previous terms of the dynamic series.

REFERENCES

- [1]Barbu, C., Pânzaru, RL, 2000, Agricultural Economics, Hyperion Publishing House, Craiova, Chapter 8, Part I, pp. 125-162
- [2]Constantin, M. et al., 2009 Marketing of agricultural production, Ed Agro Engineering, Bucharest, Chapter 3, Part I, pp. 37-72
- [3]Pânzaru, R.L., Medelete, D.M, Ștefan, G., 2009, Economics of crop production, Universitaria Publishing House, Craiova, Chapter 3, pp. 7-67
- [4] Ștefan, G., Bodescu, D., Toma, A.D., Pânzaru, R.L., 2007, "Economy and agri-food chain," Alfa Publishing House, Iași, Chapter 10, pp. 326-446
- [5] Ștefan, M., 2011, Crop Production I + II, Manual for distance learning university, Universitaria Publishing House, Craiova, Theme 1, p 4-30
- [6] <http://dolj.insse.ro>
- [7] <http://olt.insse.ro>